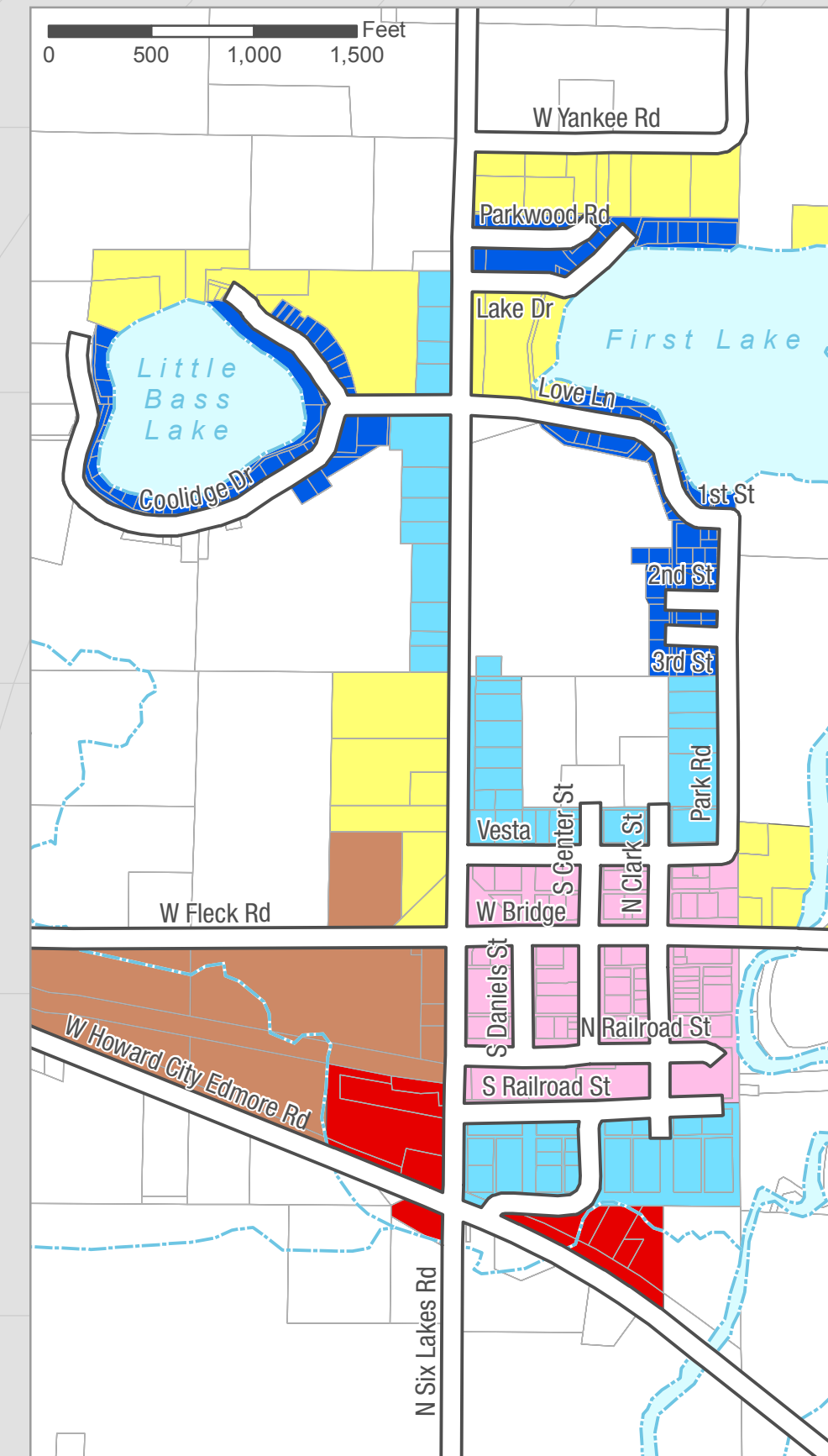
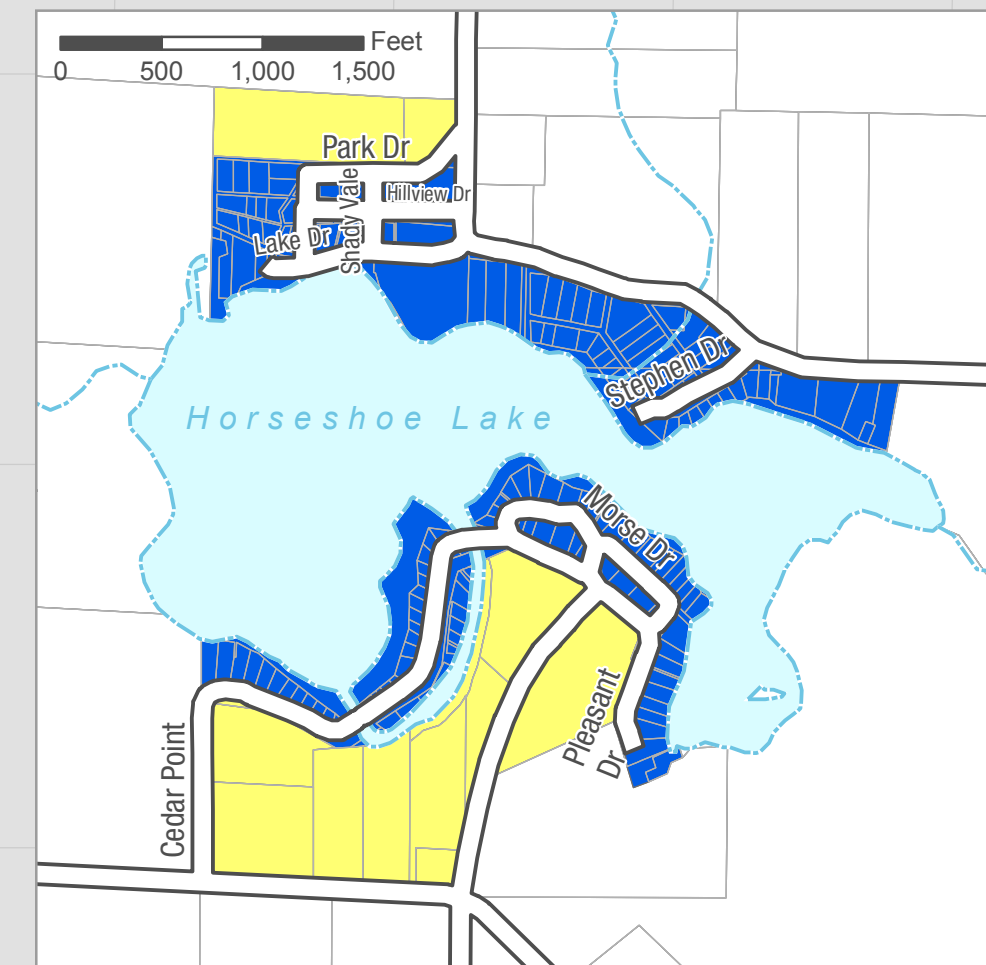


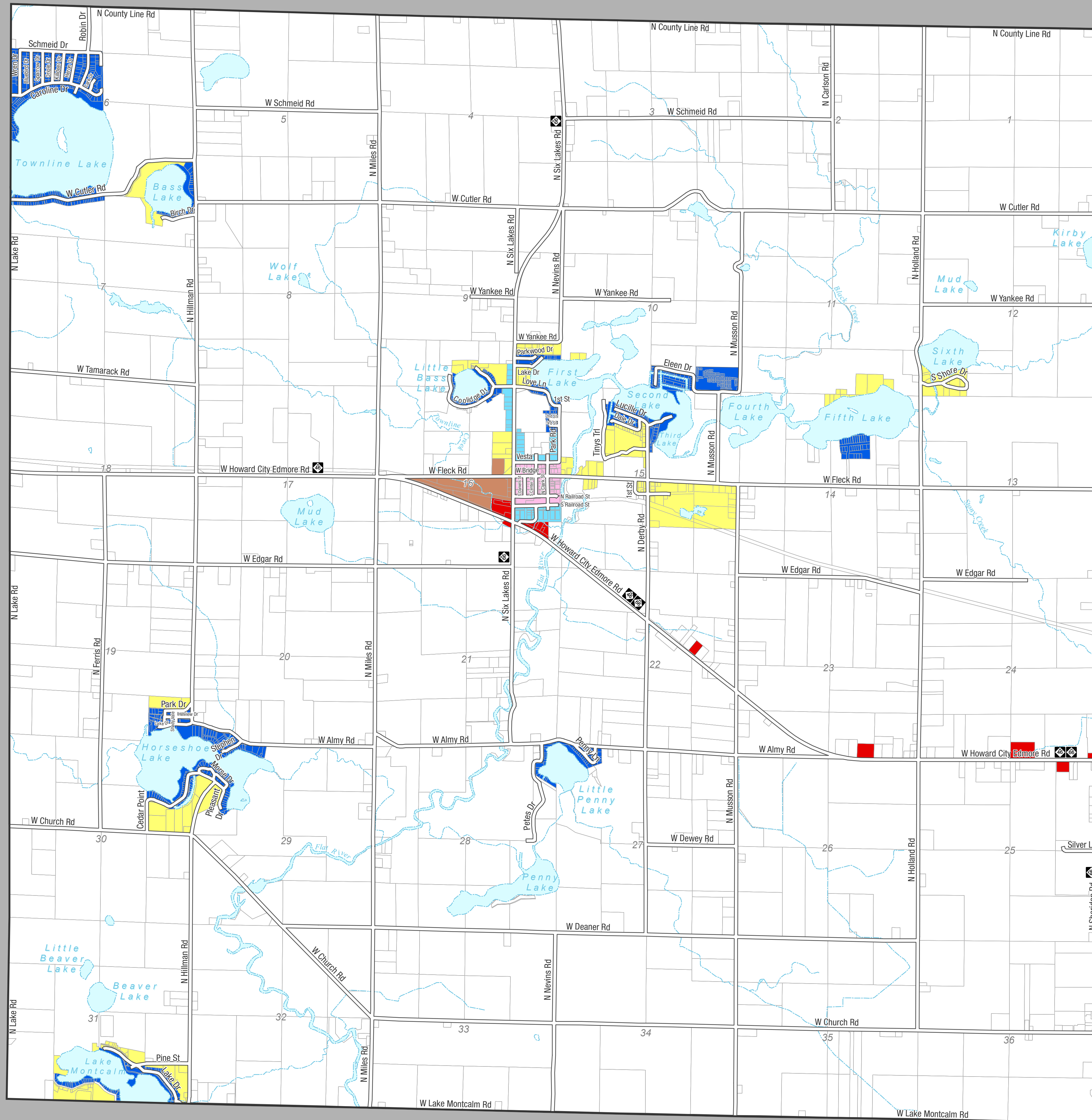
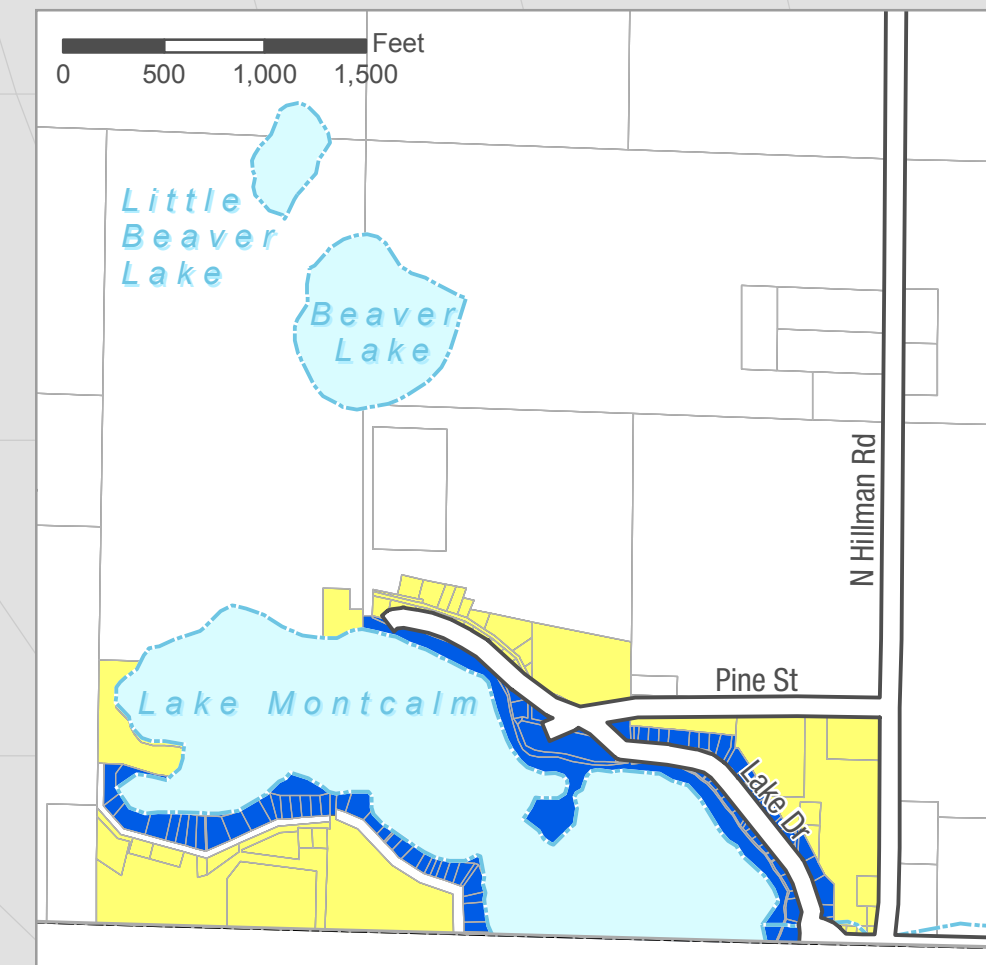
Six Lakes Area



Horseshoe Lake Area



Lake Montcalm Area



BELVIDERE TOWNSHIP

MONTCALM COUNTY

MICHIGAN

OFFICIAL ZONING MAP

12.11.2009

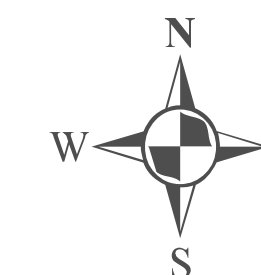
This is to certify that this is the Official Zoning Map of the Belvidere Township Zoning Ordinance adopted on the 10th day of June, 2010.

Larry Delamater
Supervisor

Sheila Smith
Clerk

ZONING DISTRICTS

- AR - Agricultural-Residential District
- R-1 - Residential District
- R-2 - Residential District
- R-3 - Residential District
- R-4 - Residential District
- R-MF - Multiple Family Residential District
- R-MHC - Manufactured Housing Community District
- C-1 - Mixed-Use Village Commercial District
- C-2 - General Commercial District
- I-1 - Light Industrial District
- PUD - Planned Unit Development District



0 500 1,000 1,500 Feet

0 0.25 0.5 Miles

LANDPLAN
INCORPORATED
rural community planning & zoning services

4211 OKEMOS ROAD, SUITE 15
OKEMOS, MI 48864
517.347.2120

OHM
Advancing Communities

2450 DELHI COMMERCE DRIVE, SUITE 2
HOLT, MI 48184
517.699.1610
517.699.1662 (fax)

Data provided by Orchard, Hiltz and McCliment and Montcalm County. Orchard, Hiltz and McCliment does not warrant the accuracy of the data and/or the map. This document is intended to depict the approximate spatial location of the mapped features within the Township and all use is strictly at the user's own risk.